

Welcome to Robert Nimi Nikkei Home

ロバート新見日系ホームへようこそ！

Are you, or your family member are interested in moving into an Assisted living facility? This is the quick guide of the procedure to move to Robert Nimi Nikkei Home.

Description;

Robert Nimi Nikkei Home is an **Assisted Living facility** located in Burnaby, B.C., within a community complex called Nikkei Place. Robert Nimi Nikkei Home is a modern apartment building for residents aged 55 and over. While residents have a large degree of independence in day-to-day living, trained, qualified staff offer personal support and care 24 hours a day.

Simple facts;

- Robert Nimi Nikkei Home is a Fraser Health Authority Funded Assisted Living facility
- Has 3 Bachelor units, 5 Enhanced Bachelor units, 51 One Bedroom units
- Established September 13, 2002

Robert Nimi Nikkei Home's Services includes;

- Accommodation
- Kitchen in one-bedroom/Enhanced Bachelor unit and Kitchenette in Bachelor unit
- Daily Breakfast and Dinner. Lunch is available at a separate cost to the Tenant
- Beverages through out the day
- Weekly light Housekeeping in Tenant's suite
- Changing and laundering of linens weekly or bi-weekly
- Washer/Dryer in One Bedroom unit/Enhanced Bachelor unit, and Weekly laundry service for Bachelor unit
- 24 hours emergency response system
- Utilities (excluding telephone, cable television, internet)
- Smoke detectors in suite and common area, have fire sprinkler
- Fire alarm monitoring
- Landscaping/snow removal
- Therapeutic SPA TUB
- Activities programs 6 days/Week

Let's check!

Am I eligible for Robert Nimi Nikkei Home?

Are you aged 55 and over, and
require assistance(2 Care needs) with your daily personal care?
(Care need example; medication/dressing/undressing/bathing, etc.)

YES

**3 months home support
for personal care**

Point !

Assessment by
Community Health Nurse
(**Case Manager**) to apply for AL

Care Needs Not Met

Care Needs High

Care Needs Met

Enjoy comfort of your
own home
OR
Independent Living

Long Term
Care Home

Community Health Nurse submit
the completed application to
the Access Care Transition (ACT) Team in
the health authority

Provide:

- Latest Notice of Assessment
- 3 Assisted Living sites of your choice

Waiting LIST

Matched to a suitable unit

TOUR

Care Needs
too High

Care Needs Met

Long Term Care Home
or suitable facility

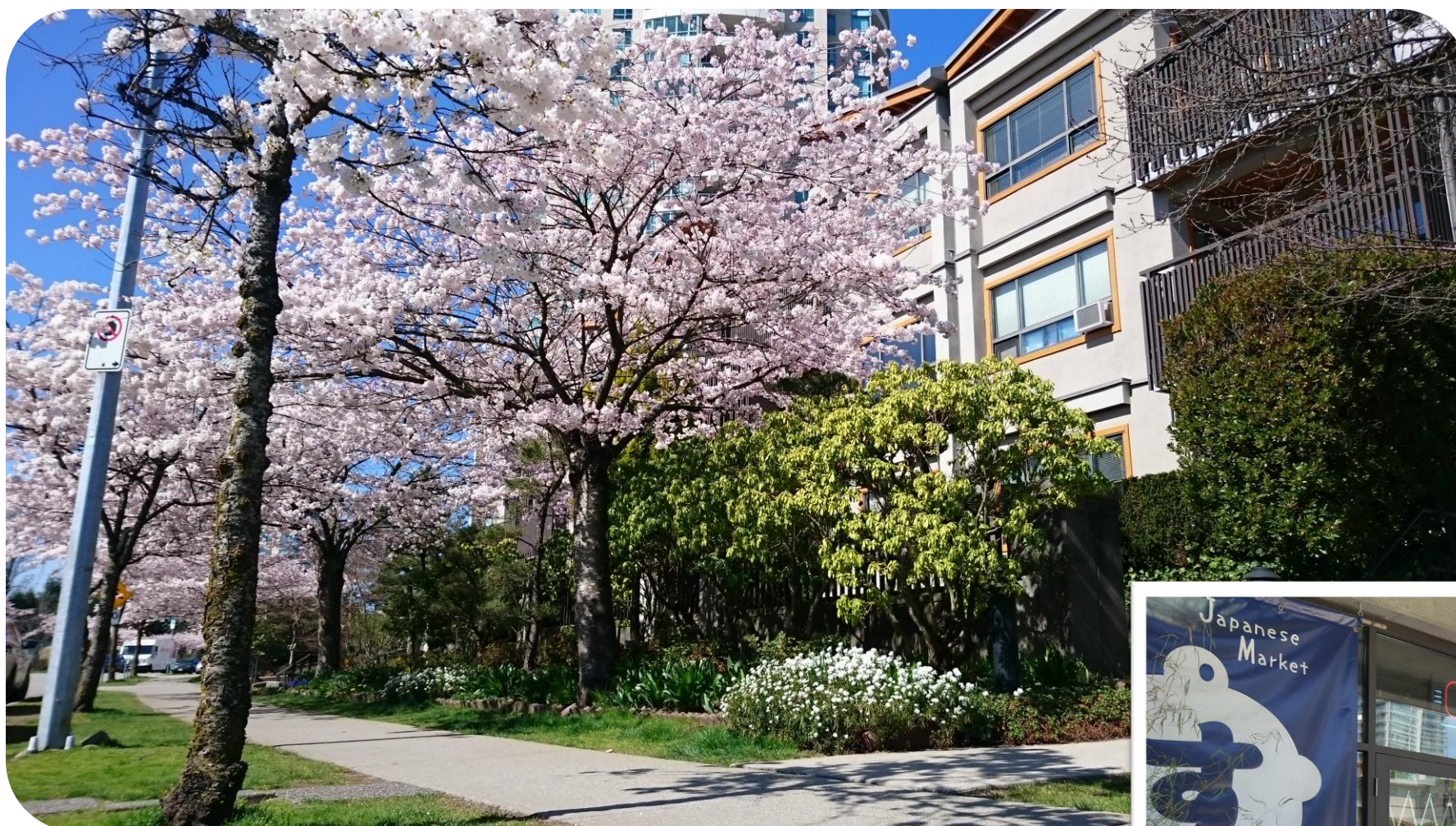
10 Days to Move In

Pre-Occupancy Meeting with
Nikkei Home, and
Case Manager from Fraser Health

Care Needs
too High

Welcome to Robert Nimi Nikkei Home!

What is Robert Nimi Nikkei Home like?



Entrance



Dining



Bachelor(Studio) Unit

(No separate bedroom)

- Kitchenette/Mini Fridge
- Bathroom
- Free Laundry service by Nikkei Home



Enhanced Bachelor(Studio) Unit

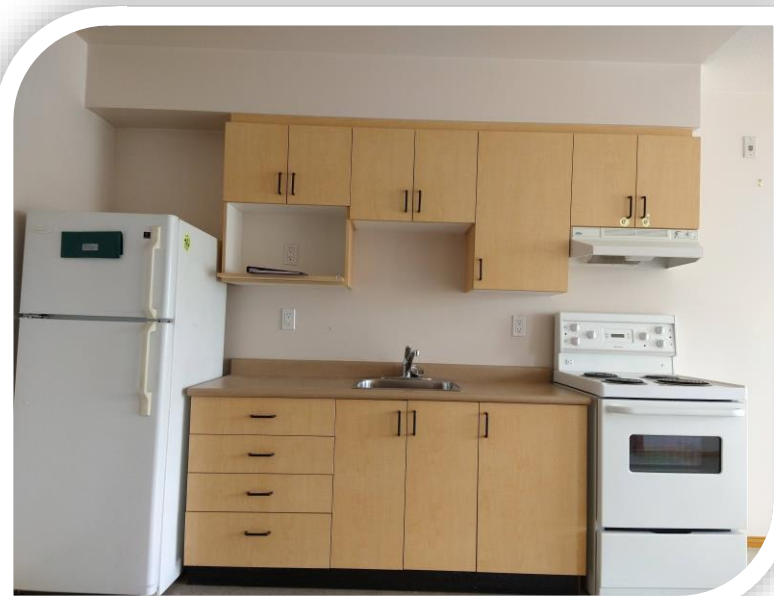
(No separate bedroom)

- Full size kitchen/Full size refrigerator
- Washer and dryer
- Bathroom



One Bedroom Unit

- Full size kitchen/Full size refrigerator
- Washer and dryer
- Walk-in closet
- Storage space
- Balcony
- Bathroom





**Kenko Wellness Lounge-
activity room**



Where are you at, and where to Start?

Require assistance(2 Care needs) with your daily personal care?
Care need example; medication/dressing/undressing/bathing, etc.

YES

**3 months home support
for personal care**

Assessment by
Community Health Nurse
(Case Manager) to apply for
Assisted Living

REQUEST CASE MANAGER

First step is requesting a Case Manager. **Contact your Health Care Authority**(ex. Family doctor, Fraser Health, Vancouver Coastal Health, etc) and request a Case Manager

REQUEST ASSESSMENT

You have a Case Manager, receiving home support and would like to apply assisted living? **Contact your Case Manager for assessment.**

*Care provided by family member is not considered home support

You have a Case Manager, Assisted living eligibility and application is in process?

Fraser Health will match to the suitable unit when it becomes available. Case Manager or matched Assisted Living facility will contact you for the **TOUR/FINAL ASSESSMENT** to see if Care Needs Met.

Care Needs Met

Robert Nimi Nikkei home is under Fraser Health. If you are in different health region in B.C. and wishing to live at Robert Nimi Nikkei home, contact Health Authority in your region first, and ask your case manager for transfer.

Home Health Case Management

Fraser Health Authority

1-855-412-2121

Open 7 days a week, 8:30 a.m. - 9:00 p.m.
statutory holidays 8:30 a.m. - 4:30 p.m.



Note: our MONTHLY FACILITY TOUR is not considered to an official TOUR/FINAL ASSESSMENT and is open for people who wish to check our facility in-person before the Assisted Living application processes is started/completed. For the process, actual TOUR/FINAL ASSESSMENT (please check the chart "Am I eligible for Robert Nimi Nikkei Home?") would be held after the unit is matched.

You can book FACILITY TOUR @604-777-5000